

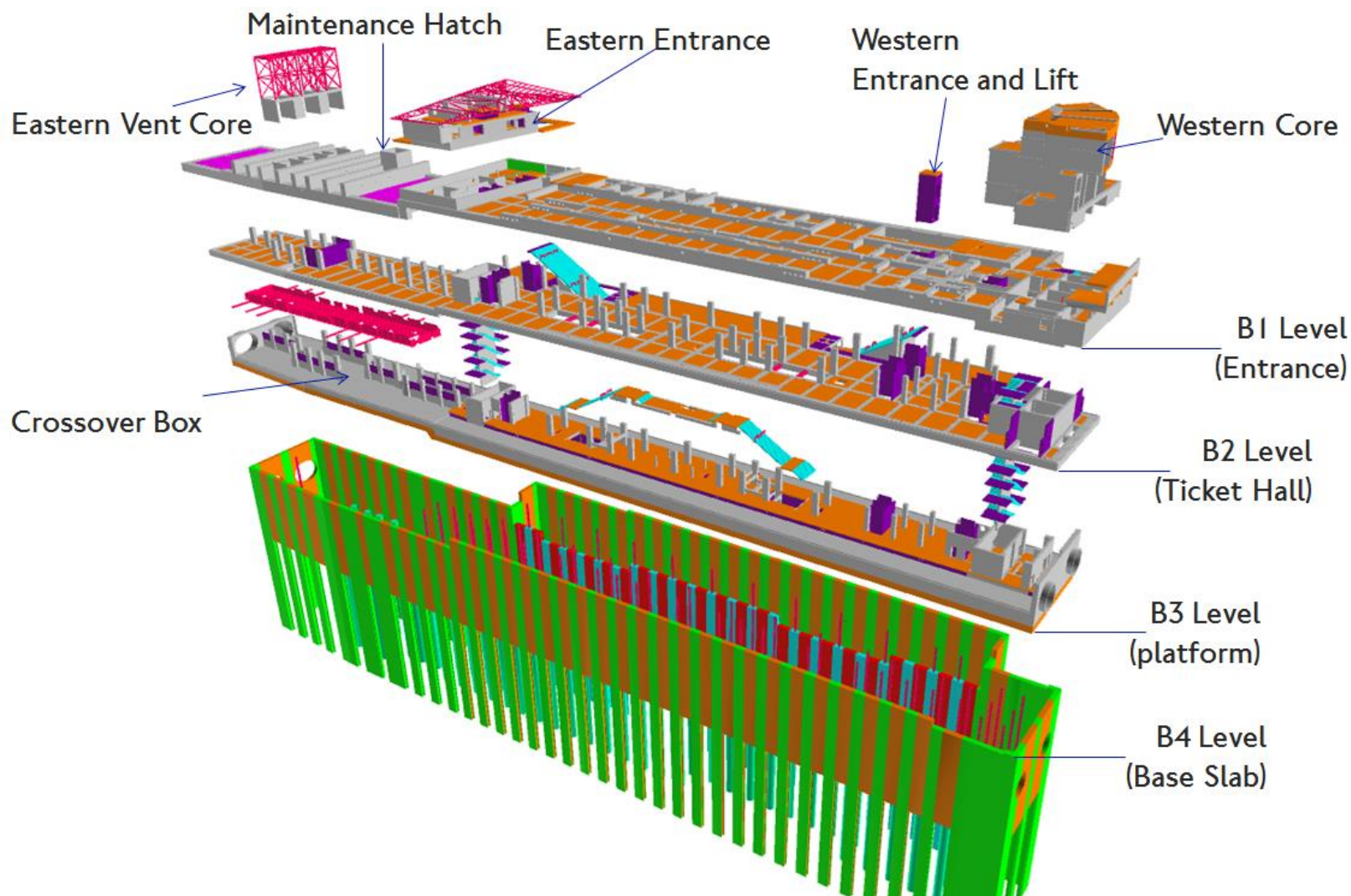
Northern Line Extension

Battersea

Community Liaison Group

06 February 2020

#	Action	Update
1	TfL to confirm if air quality monitoring results are available for public scrutiny.	Results are available on TfL website. Search for 'Environmental Reports' page and then 'Air Quality on the Underground'. A new report is due for publication.
2	RF to circulate the dates for the next four Battersea CLG meetings and check the correct protocol for holding meetings during the Mayoral electoral period.	CLGs are normally held in January; April; July; October. This is a difficult request as I have to coordinate project teams, councillors, residents and venues ... Any changes in the forward agenda would require a lot of additional administration and I simply don't have the resources to do this. I am still waiting for legal advice on whether we can run the next CLG during pre-election period.
3	RF to circulate a copy of the presentation following each meeting.	These are posted to the website following CLG. Search 'TfL and NLE'.
4	JH to confirm when the Arch 42 shortcut to the Embassy Quarter is planned to open.	Work on arch is underway and our commitment is to open this prior to Nine Elms station opening to public in Autumn 2021. Announcements will be made prior to any opening.
5	MB to confirm the location of glass slide four.	Location of glass slide 4 is on the railings along Thessaly Road
6	Ensure the contractors working outside the site boundary (e.g. UKPN, Thames Water) are following the relevant traffic management plans.	NLE works beyond the site boundary have been completed. All road works were permitted and traffic management plans adhered to.
7	KS to check if the council currently monitors PM2.5 levels.	The London Air Quality Index measures real time air quality across the city and this includes PM2.5 measurements - http://aqicn.org/city/united-kingdom/london-westminster/



Battersea Power Station: Progress Update

Feb 2020 – at ground level



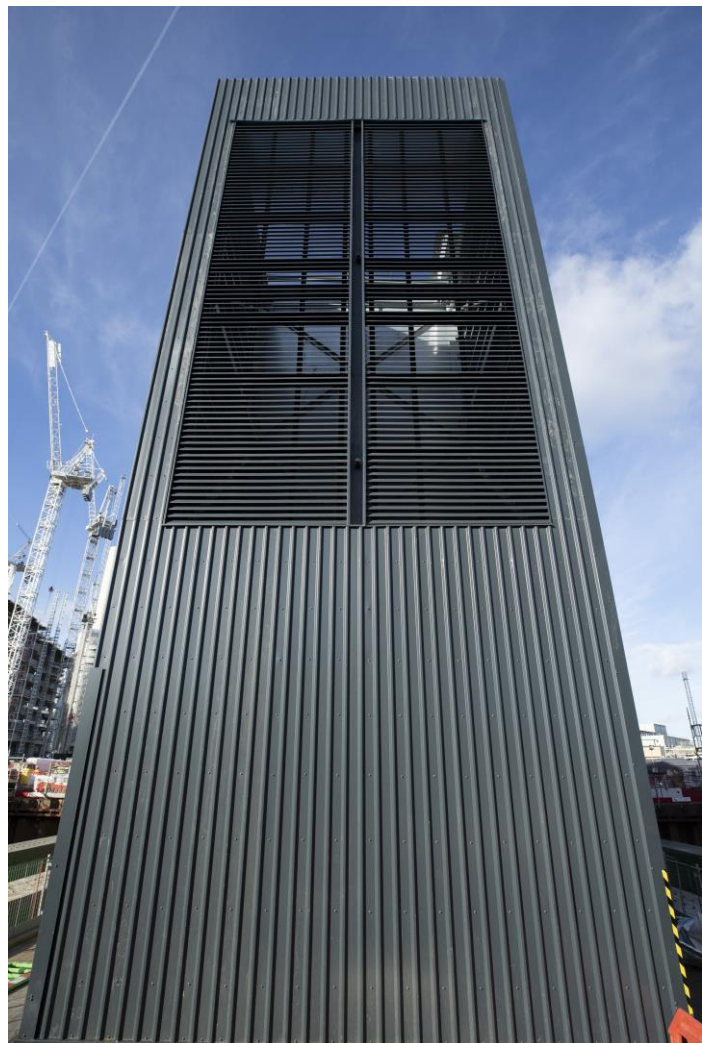
Sewer tunnelling works completed under Battersea Park Road

Handover of land to Battersea Developer to the west continued

Bridge across the site removal started including weekend working

Battersea Power Station: Progress Update

Feb 2020 – at ground level



Cladding of east vent core continued – finishing shortly.

Steels and roof structure around entrance started



Battersea Power Station: Progress Update

Feb 2020 – Lift/Escalator install ongoing



Battersea Power Station: Progress Update

Milestone for Power on within station achieved early



FERROVIAL AGROMAN
LAING O'ROURKE JV



Battersea Power Station: Progress Update

Feb 2020 – Tunnel vent install ongoing



FERROVIAL AGROMAN
LAING O'ROURKE JV



Battersea Power Station: Progress Update

Feb 2020 Platform Tiling 90% completed



FERROVIAL AGROMAN
LAING O'ROURKE JV



Battersea Power Station: Progress Update

Feb 2020 Mechanical/Electrical/Power works ongoing



FERROVIAL AGROMAN
LAING O'ROURKE JV



Battersea Power Station: Progress Update

Lookahead



- Ground level Entrance works ongoing – steels and cladding
- Bridge removal
- Change of entrance from Battersea Park Road to Kirtling Street
- Escalator & Lift install ongoing
- Mechanical/Electrical/Power works ongoing
- Premises fit out works ongoing
- Land handover to BPSDC expected to be achieved early
- Shared access with the S278 works (pavement/cycle lane/road changes)
- Power to LU traction substation

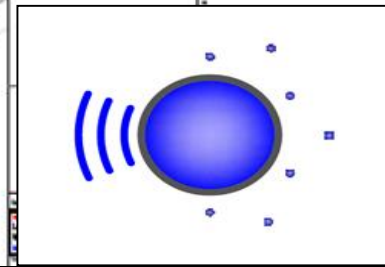
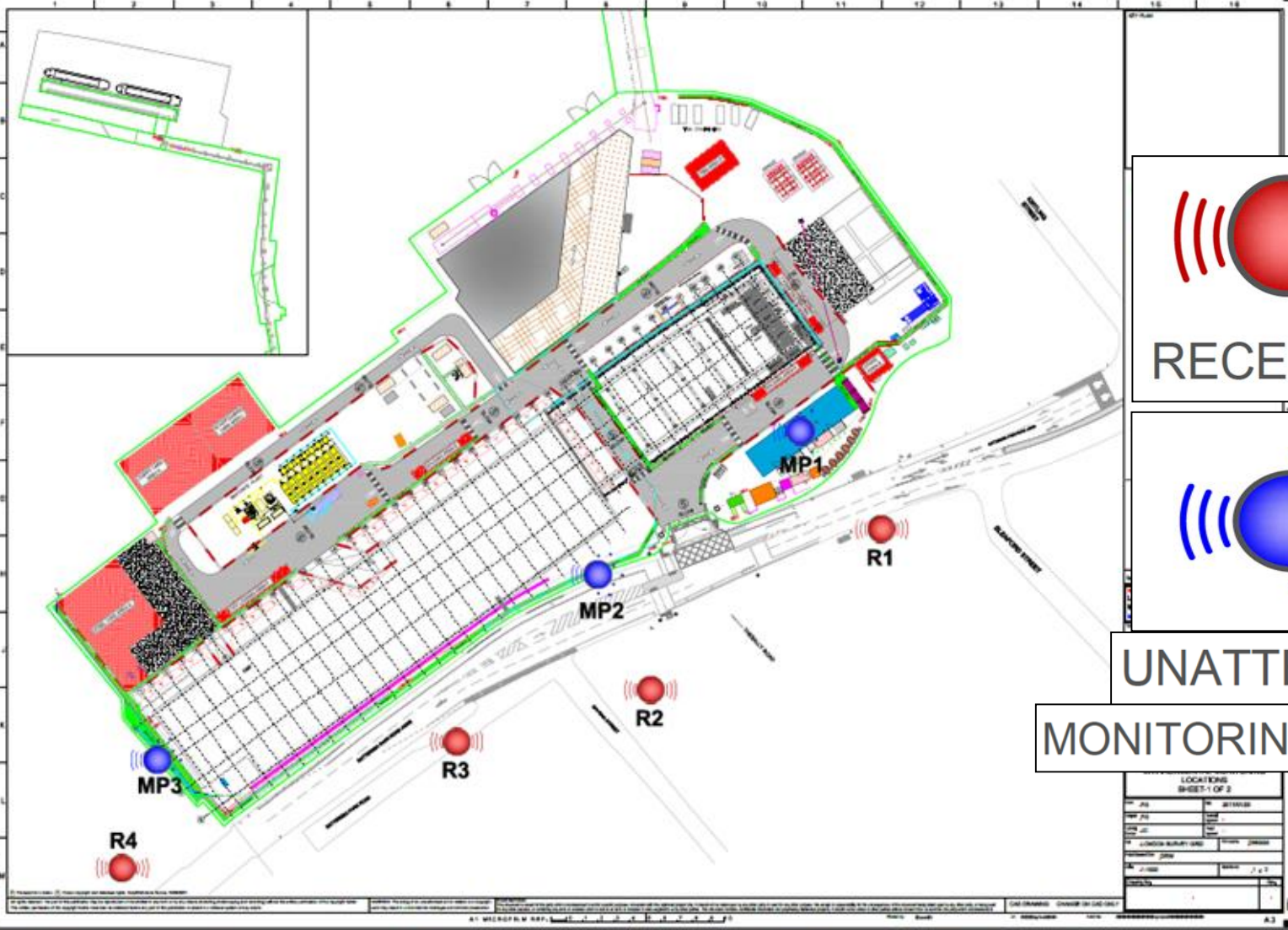


Environmental Monitoring Locations

Noise Monitoring stations and sensitive receptors



FERROVIAL AGROMAN
LAING O'ROURKE JV



UNATTENDED
MONITORING POSITION

LOCATIONS	
SHEET-1 OF 2	
NO.	DATE
MP1	
MP2	
MP3	
MP4	
R1	
R2	
R3	
R4	

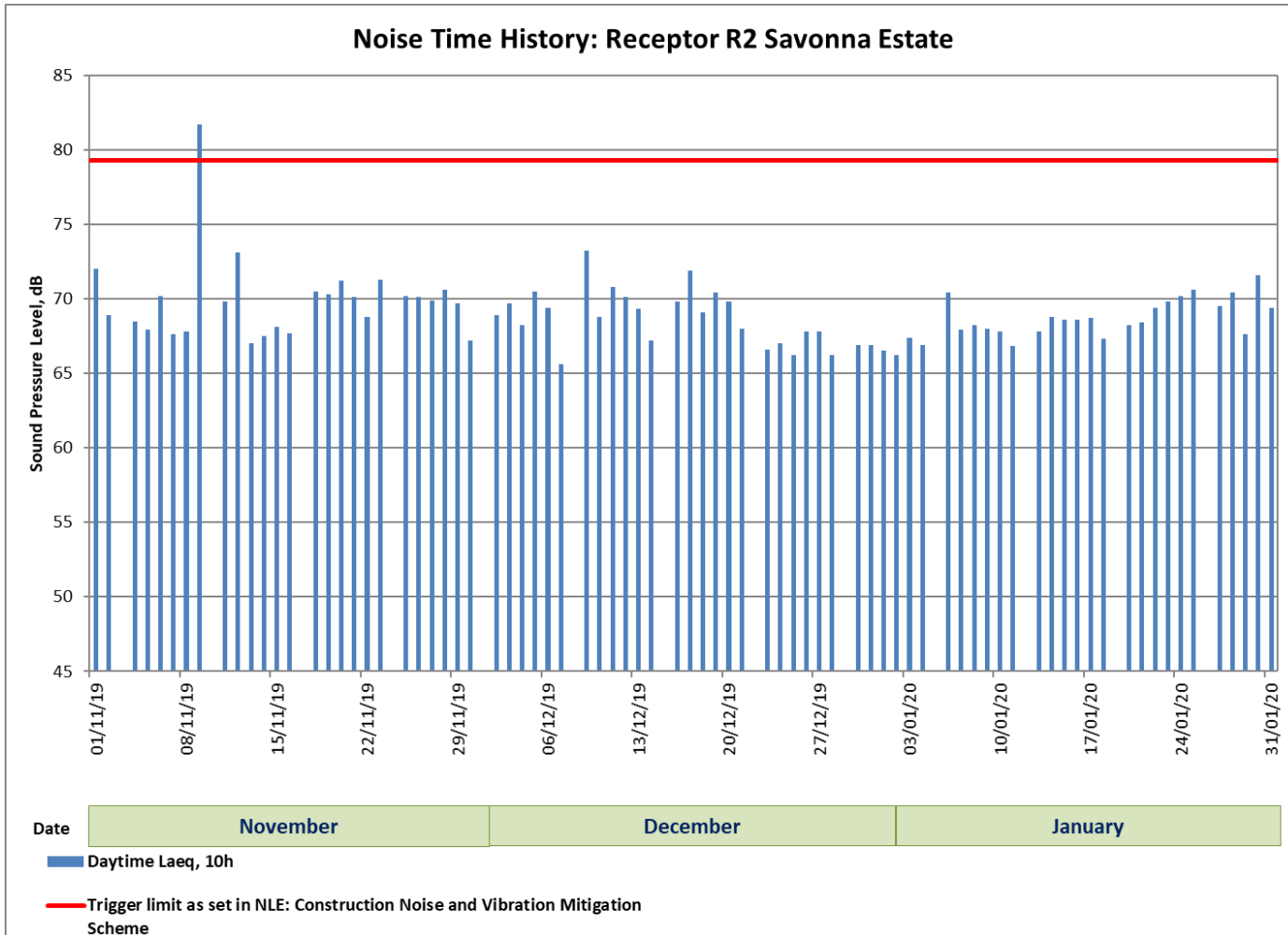


BT Monitoring

Noise monitoring



FERROVIAL AGROMAN
LAING O'ROURKE JV

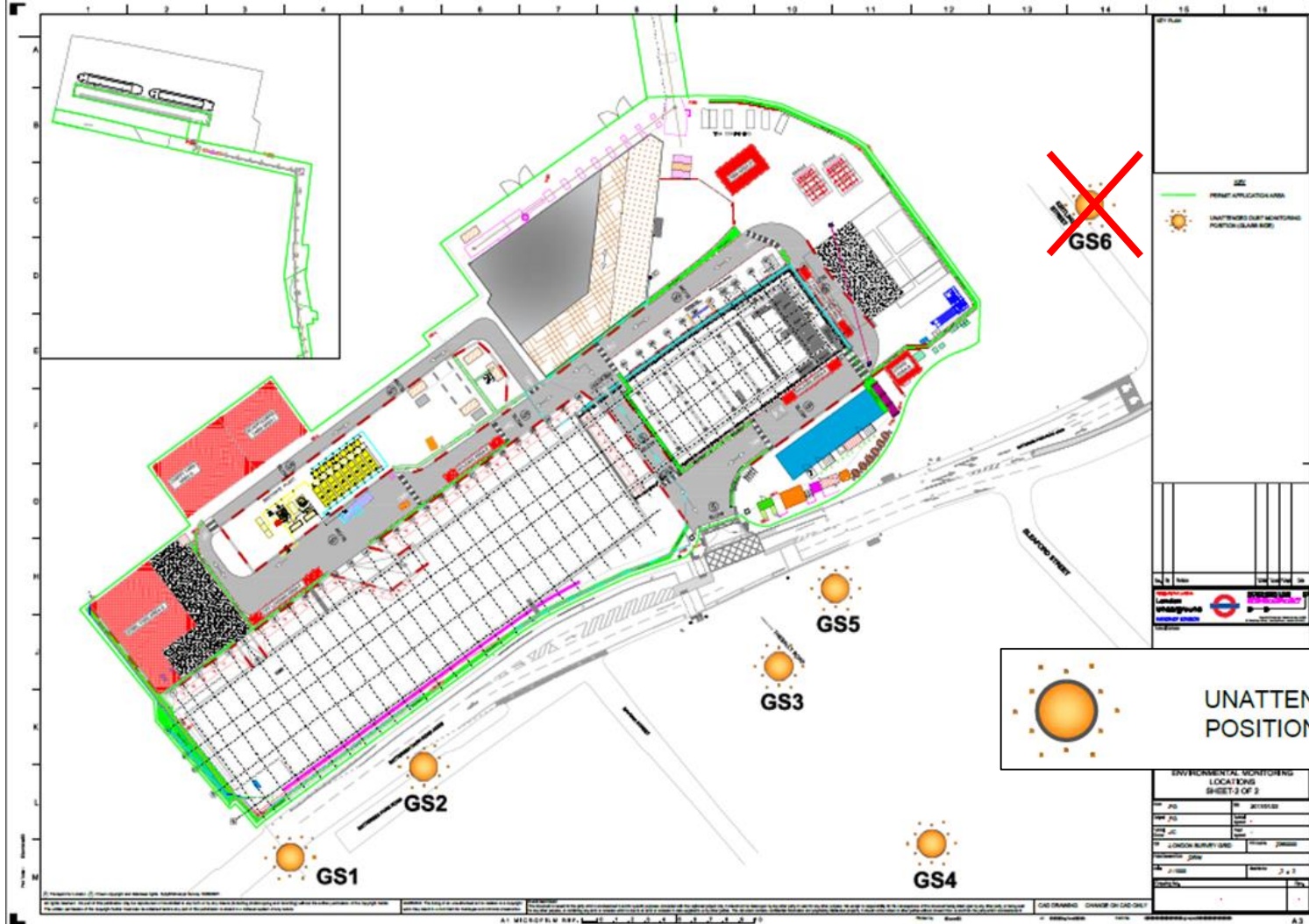


Environmental Monitoring Locations

Glass slide locations



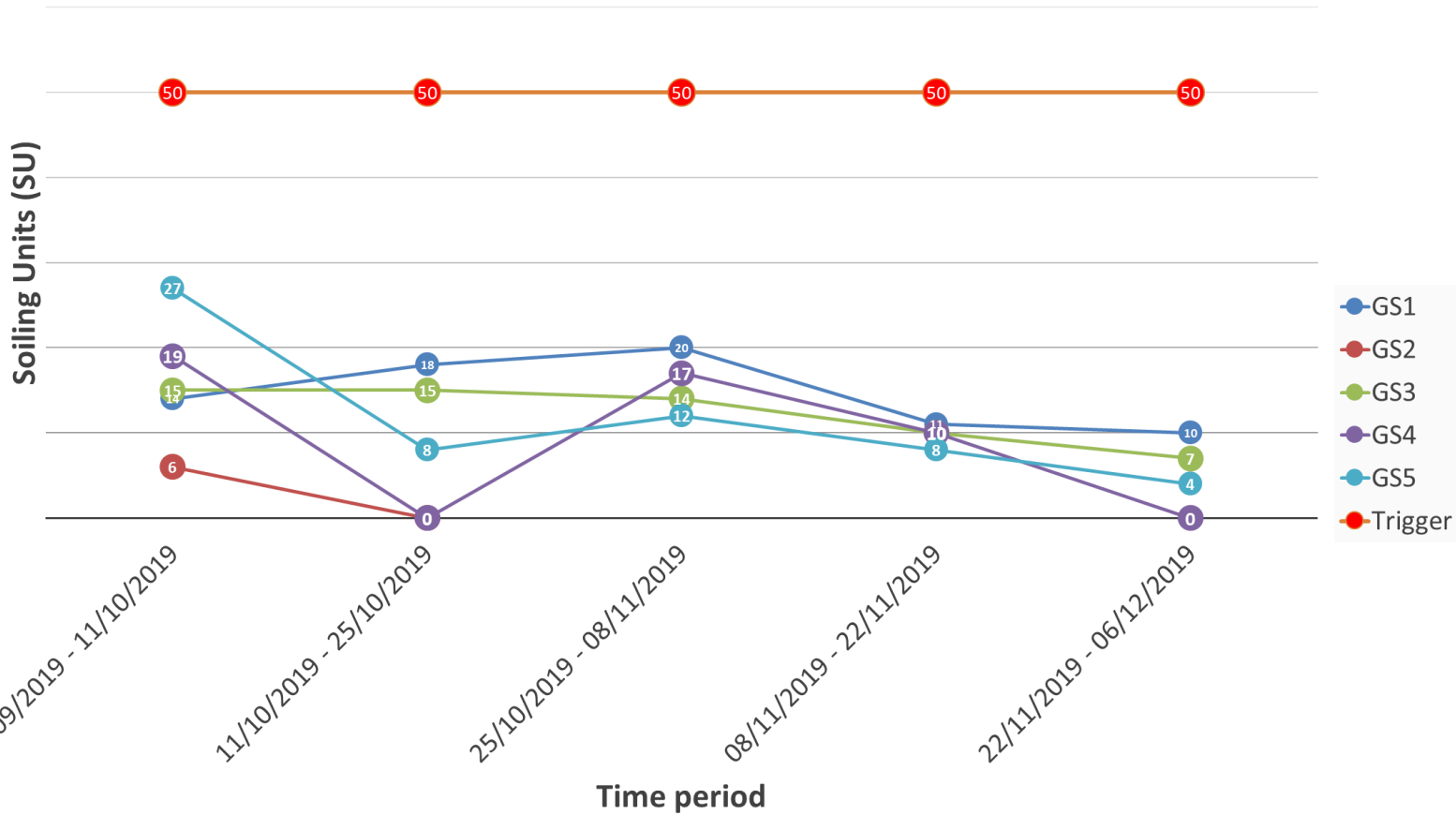
FERROVIAL AGROMAN
LAING O'ROURKE JV



BT Monitoring

Dust slides results

NLE - Battersea- Fortnightly Passive AQ monitoring



Logistics: Vehicle movements

February 2020



FERROVIAL AGROMAN
LAING O'ROURKE JV

Nov 19 – Feb 20 - 2296



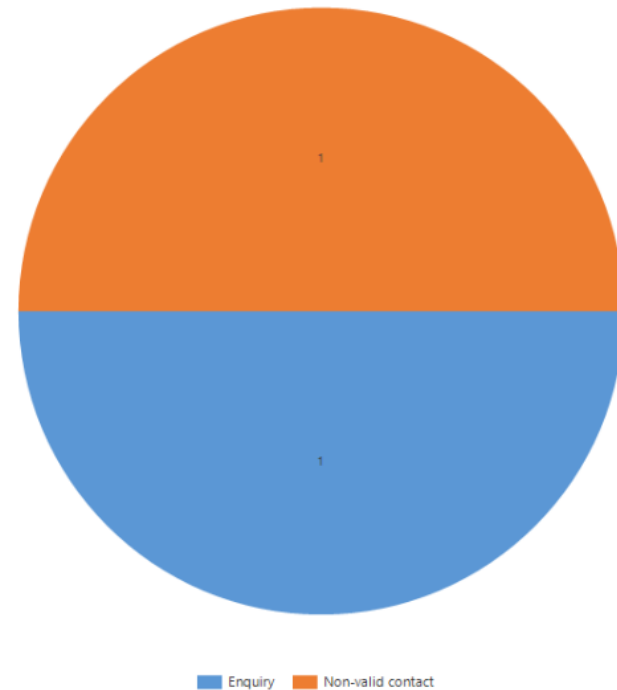
The type of vehicles received by site are generally now smaller vans and 7.5 tonne vehicles facilitating the mechanical and electrical 'fit out' works.



Complaints & Enquiries Summary

Stats for Battersea between 21 November 2019 and 3 February 2020

Case Status:	2 cases
Enquiry:	1 (50%)
Non-valid contact:	1 (50%)



Community Engagement and NLE Skills and Employment



2 students completed **work experience** on the project from **Sacred Heart**.

Attended 'Construkt' at South Thames College - a careers fair in (Wandsworth)

Attended a meet the professionals event at **St Martin in the Fields** (Lambeth)

Careers carousel at **St Saviours & St Olaves** (Southwark)

1 Dragons den activity – Landsdowne school (Lambeth)



Ways to contact us

- It is important that calls are logged through the NLE 24/7 helpdesk on 0343 222 2424 (Option 1)
- Email nle@tfl.gov.uk
- Drop In sessions
- Please visit:

<https://tfl.gov.uk/northern-line-extension>